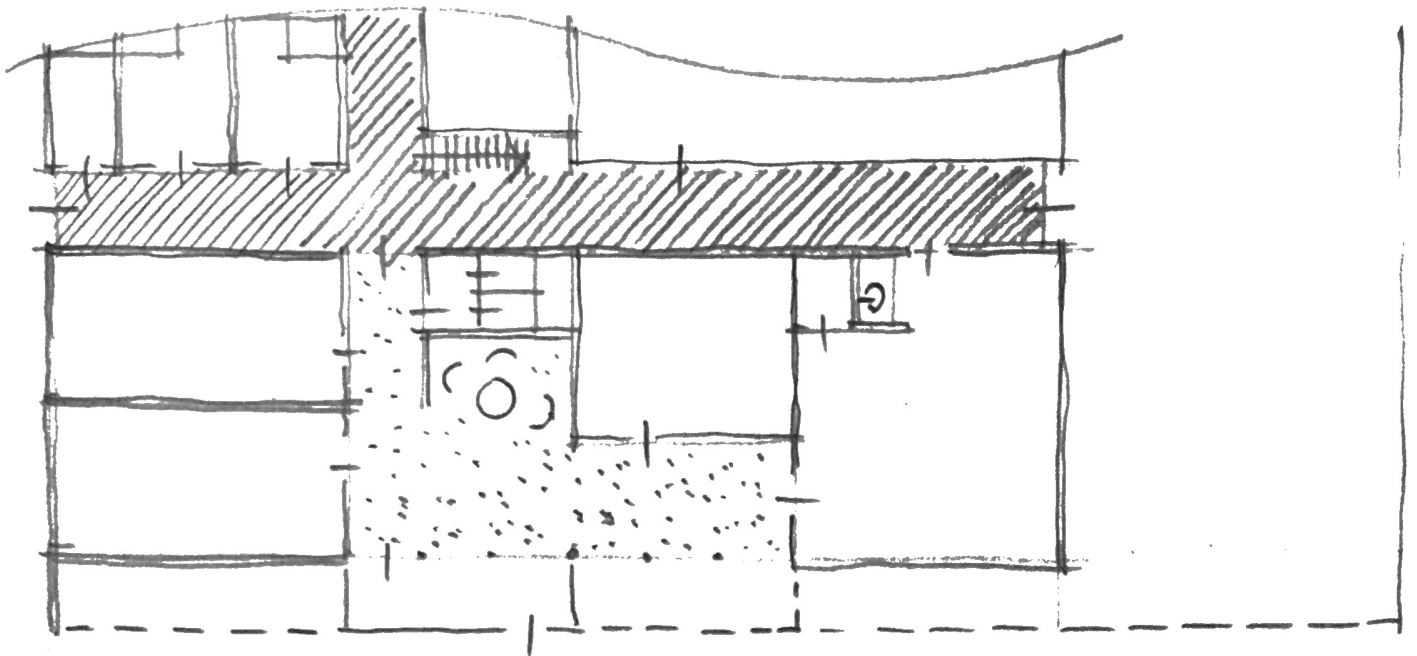
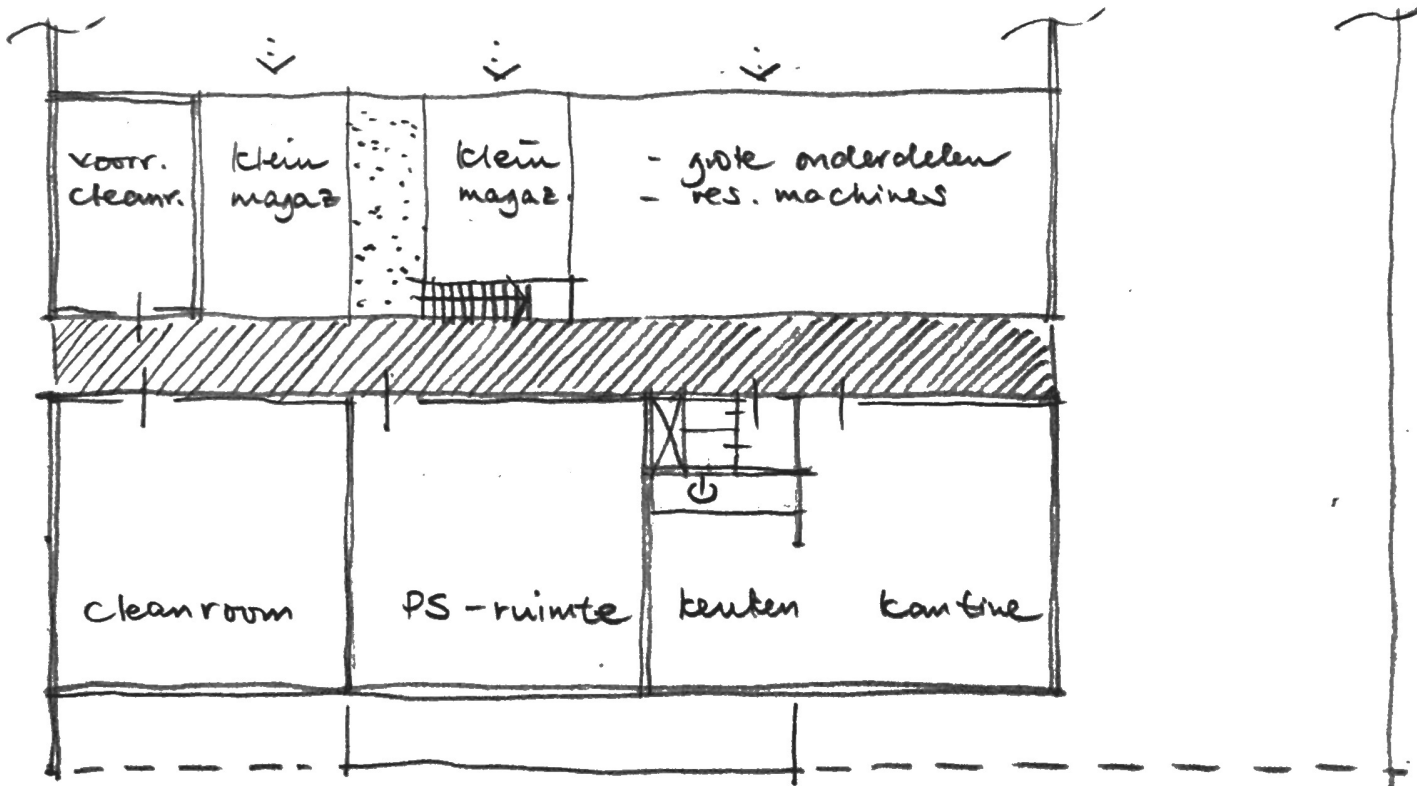


- Hal + magazijn :  $36 \times 30 \text{ m}^2 = 1.080 \text{ m}^2$
- kantoor by :  $27 \times 16 \text{ m}^2 = 430 \text{ m}^2$
- to :  $27 \times 16 \text{ m}^2 = 430 \text{ m}^2$
- totaal bro :  $1.940 \text{ m}^2$

T: 200  
170+17pk

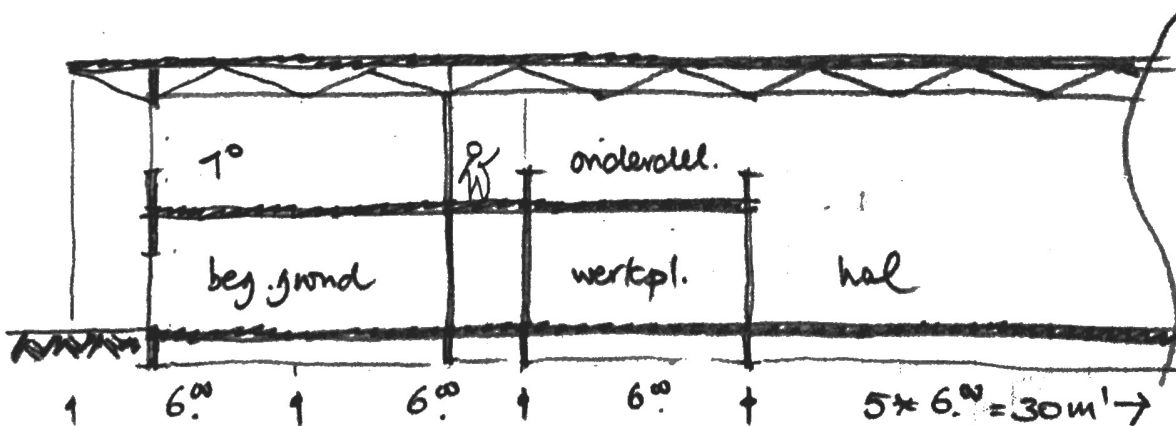


BEG. GROND 1:200



1° VERDIEPING 1:200

DOORSNEDEN 1:200



170417pt